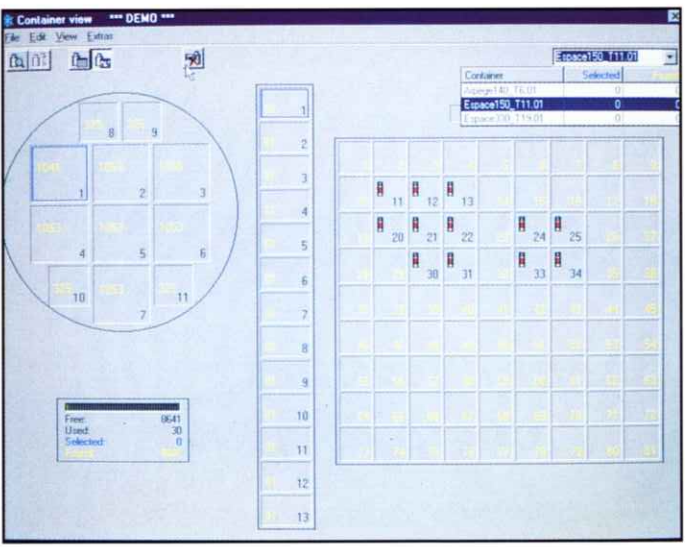


COOLBASE

Inventory control software

COOLBASE is a new software package designed to organize and control the inventory of your samples. User friendly, it allows definition, visualization, placement and retrieval of the samples in a complete management system. COOLBASE guarantees a sure and reliable conservation procedure, together with perfect traceability.



Configuration of the vessels

Each COOLBASE system is taylor made precisely to all the parameters of your inventory and its storage system. The number of vessels managed is not limited.

Definition of the samples

The vessels can be assembled into groups, according to their use. For each group, a sample profile is determined, corresponding to a set of data fields which is entirely configurable against various parameters.

Viewing the content of a vessel, the procedure can be carried out in an intuitive fashion or just as if actually handling the vessel.

Access check

Each operator is provided with a profile and a password. The profile determines the nature of actions that the operator can carry out, the fields that can be viewed as well as the storage area to which he has access. For any action, the operator's name is automatically kept in memory



Sample search. Any data field can be used as a search criteria.

Reports and traceability

When a sample is removed from a container, a conservation report is generated and can be printed. This report refers to the fields of the sample and to the operations to which it was subjected during the conservation period, including for each event, the date, the time, the operator's name and the location of the corresponding storage.

At any time it is possible to know the details of all the operations carried out on a vessel over a given period of time.

Management of the vessel

Information relating to the vessels themselves can be stored : start-up date, maintenance or decontamination tasks...

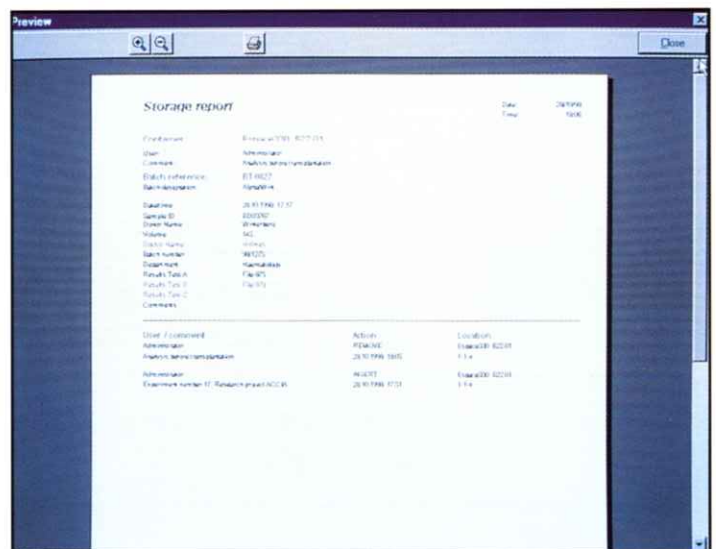
It guarantees an unfallible traceability and a preventive maintenance. The operator is informed whenever an operation has not been carried out at due date.

Samples inventory

Using a keyboard, the operator enters the details of each of the samples. A bar coded entry is available as an option. The inventory is carried out after selection of a storage location. When several samples show common fields, a group entry facility avoids repetitive entries. Batches of samples can also be created. They are identified and can be subjected to the search.

Search of samples

The operators can search for samples from one or several of its fields. The search can be applied to individual samples or batches, being stored or already removed from the vessels.



Edition of the conservation report. This gathers the entire history relating to the conservation of the sample.

Multipost use

COOLBASE can be used simultaneously from several work stations and different operators.

Minimum features of the micro computer

PC compatible, Micro computer operating Windows 95, 98 or NT 32 MO RAM. Disk space from : 2 to 30 MO according to the number of vessels. Minimum screen resolution : 800 x 600. Cd-Rom drive.